

50 TON TRUCK CRANE

Kato NK-500E-v



CRANE HIRE LTD.

Hire Desk Tel: +353 1 6268426

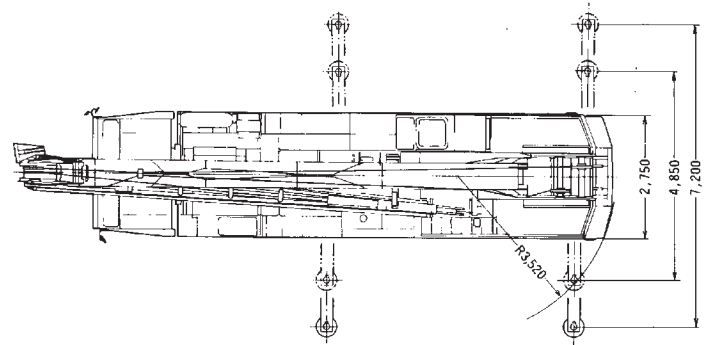
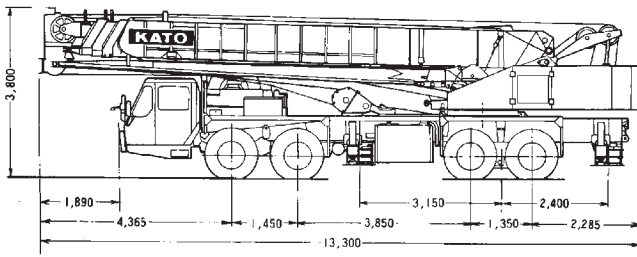
Fax: +353 1 6268061

50 TON TRUCK CRANE

Kato NK-500E-v

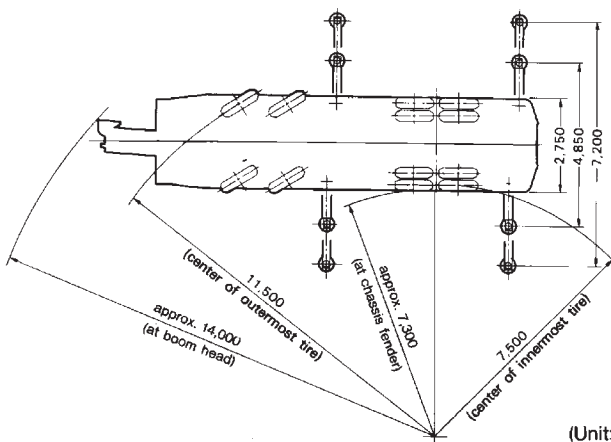


MITSUBISHI KJ508SLE



(Unit: mm)

MITSUBISHI KJ508SLE



(Unit: mm)



CRANE HIRE LTD.

Hire Desk Tel: +353 1 6268426

Fax: +353 1 6268061

50 TON CRANE - DEMAG KATO NK-500E-V

Rated lifting capacity

Outriggers fully extended with front jack - 360° full range
Outriggers fully extended without front jack - over side and over rear

Working radius (m)	10.8 m Boom	14.45 m Boom	18.1 m Boom	21.75 m Boom	25.4 m Boom	32.7 m Boom	40.0 m Boom
3.0	50.50 ¹	28.00	28.00	24.00	-	-	-
3.5	42.20	28.00	28.00	24.00	18.00	-	-
4.0	37	28.00	28.00	24.00	18.00	-	-
4.5	33.00	28.00	28.00	24.00	18.00	-	-
5.0	30.20	28.00	28.00	24.00	18.00	13.00	-
5.5	27.50	26.50	25.60	23.20	18.00	13.00	-
6.0	25.00	24.00	23.50	21.50	18.00	13.00	-
6.5	22.70	22.30	21.80	19.90	18.00	13.00	7.50
7.0	20.70	20.30	20.00	18.40	16.80	13.00	7.50
7.5	18.90	18.60	18.50	17.10	15.70	13.00	7.50
8.0	17.40	17.10	17.00	15.90	14.80	12.30	7.50
8.5	15.95	15.70	15.60	14.65	14.00	11.60	7.50
9.0	14.35	14.20	14.10	13.50	13.20	11.00	7.50
9.5	-	12.85	12.70	12.55	12.45	10.50	7.50
10.0	-	11.70	11.55	11.45	11.40	10.00	7.30
11.0	-	9.75	9.60	9.50	9.45	9.10	6.80
12.0	-	8.20	8.10	8.00	7.95	8.30	6.30
13.0	-	7.00	6.85	6.75	6.70	7.55	5.90
14.0	-	-	5.85	5.75	5.70	6.50	5.50
16.0	-	-	4.25	4.15	4.10	4.95	4.70
18.0	-	-	-	3.00	2.95	3.75	4.00
20.0	-	-	-	2.10	2.05	2.80	3.30
22.0	-	-	-	-	1.30	2.10	2.55
23.0	-	-	-	-	1.00	1.80	2.25
24.0	-	-	-	-	-	1.50	2.00
26.0	-	-	-	-	-	1.05	1.50
28.0	-	-	-	-	-	0.65	1.10
30.0	-	-	-	-	-	-	0.75
31.0	-	-	-	-	-	-	0.60
Standard hook	for 50.5 ton				for 20 ton		
Hook weight	500 kg				270 kg		
Parts of line	12	7	7	6	5	4	3
Critical boom angle	-	-	-	-	-	25°	35°

**Our Demag AC 120 working for PJ Hegarty
in Wyeth Grange Castle, 2005**

